



Meridian Place, London, E14 9FF
Asking Price £350,000

coopers
OF LONDON EST. 1986

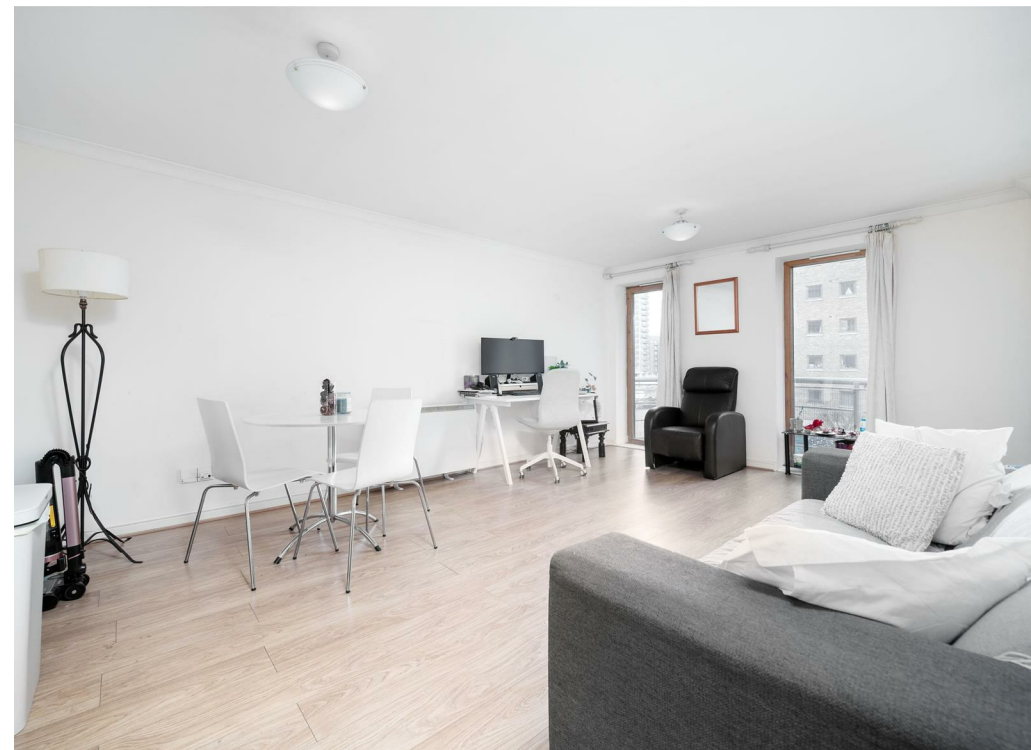
Meridian Place, London, E14

- Modest size one bed at 578 sq ft
- Spectacular River Views
- Communal Gardens
- Concierge
- Allocated Parking Space
- Walking Distance to Canary Wharf
- Good Transport Links
- Chain free for fast sale

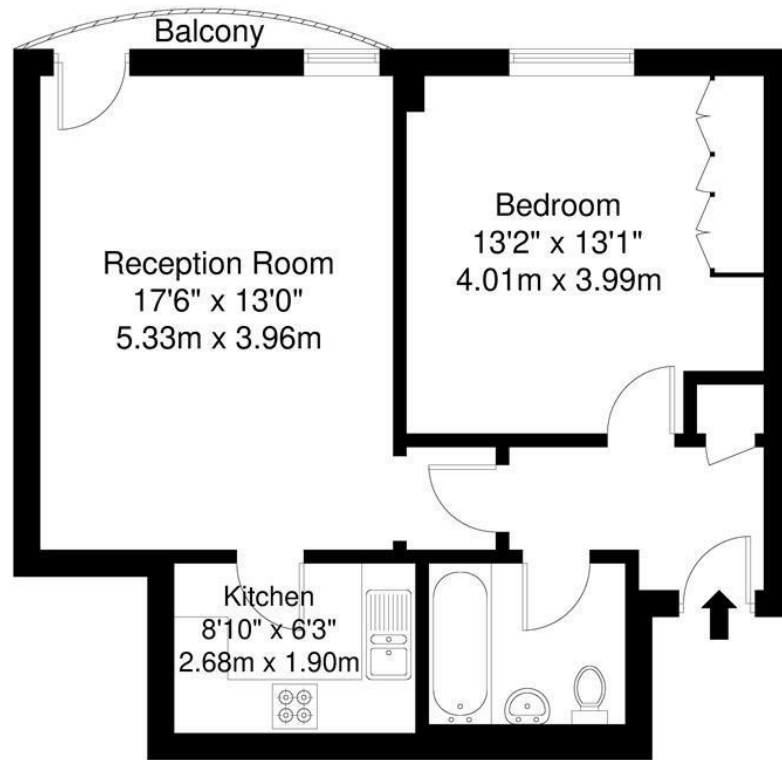
Coopers of London are proud to present this generously sized one-bedroom apartment in a well-regarded Canary Wharf development.

This property features a balcony overlooking West India Dock, a spacious double bedroom, separate fully equipped kitchen, large reception, bathroom and allocated parking space.

The development, conveniently located near South Quay DLR Station and the amenities of Canary Wharf, also benefits from day time concierge and very well kept communal gardens.





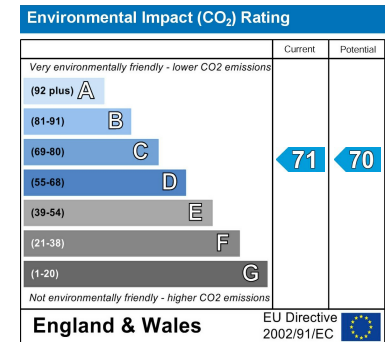
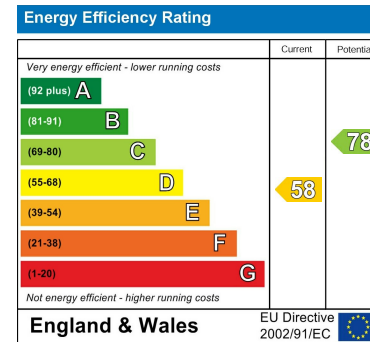


Second Floor

Meridian Place, E14

Total Gross Internal Area = 53.7 sq m / 578 sq ft

All Measurements are approximate and for identification guideline purposes only, not to scale.
Compliant with the RICS code of measuring practice



Viewing

Strictly by appointment with:
Coopers of London, 22 Cleveland Street,
Fitzrovia, London W1T 4JB
info@coopersonlondon.co.uk

0207 580 9658

These particulars, whilst believed to be accurate are set out as a general outline only for guidance and do not constitute any part of an offer or contract. Intending purchasers should not rely on them as statements or representation of fact, but must satisfy themselves by inspection or otherwise as to their accuracy. No person in this firm's employment has the authority to make or give any representation or warranty in respect of the property.